

# MOYNE - ROBERTS DATA SHEET

DATA SHEET NUMBER

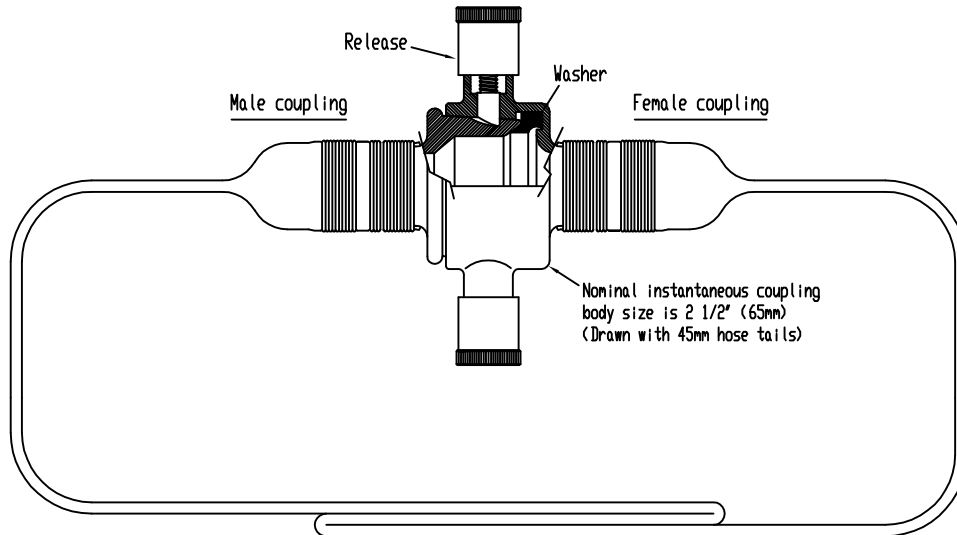
DR 383

ISSUE / DATE

6 / 22.11.07

PAGE

1 of 1



**DESCRIPTION :** A high pressure Type 2 fire hose with synthetic jacket and abrasion resistant outside elastomeric coating and with an EPDM rubber lining. Supplied with 2 1/2" wired-on instantaneous couplings.

**SPECIFICATION :**

HOSE : Complies with BS 6391:1983 Type 2

COUPLINGS : Comply with BS 336. Manufactured from aluminium LM6 BS 1490 or Gunmetal LG2 BS1400

HOSE COLOUR : Red

HOSE BURST PRESSURE : 50 bar

HOSE & COUPLING WORKING PRESSURE : 15bar maximum

IDENTIFICATION : Longitudinal brand reading Moyne-Roberts BS6391 Type 2

WP 15 bar BP 50 bar followed by size and manufacturing date.

This brand to be shown on both sides of the hose and at both ends.

CODE	SIZE	COUPLING MATERIAL
DR21004B	65mm x 23m	Aluminium *
DR21004C	65mm x 30m	Aluminium *

\* Gunmetal couplings are available to special order.



MOYNE-ROBERTS

+353 (0)49 32477 / +44 (0)1772 312281

TITLE :

TYPE 2 LAYFLAT FIRE HOSE AND COUPLINGS